

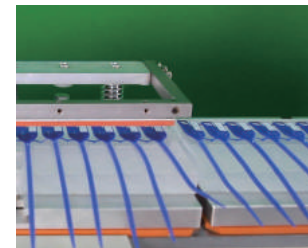
# SPCS-818JHVD1

## 1-Color Pad Printer with Sealed Ink Cup & Servo driven vertical conveyor



### Features

- PLC controlled functions, user friendly interface, simple and convenient operation;
- High-quality aluminum alloy is used to make structure robust and weight light;
- Left/right movements of worktables are driven by High-precision servo motor ;
- Equipped with sealed ink cup ,ink density is stable; no need to add solvent for 6-8 hours, lesser volatile , no splashing ,so it save ink for more than 50% also operating environment is clean and comfortable;
- Ink cup is durable and the removal and installation is convenient;
- Dwell time at each position is adjustable to meet different printing requirements;
- "Twice inking, one printing function " is designed for thicker ink film;
- Unique cup-edge structure ensures neat ink scraping; the printing outcome is sharp and beautiful;



Printing Sample

### Technical Data

- |                      |                    |
|----------------------|--------------------|
| ● Ink cup diameter   | Φ 100(mm)          |
| ● Standard plate     | 125x627(mm)        |
| ● Worktable          | 160x200(mm)        |
| ● Air consumption    | 350(L/min)         |
| ● Max.printing speed | 1000(pcs/hr)       |
| ● Niose (dB)         | <80                |
| ● Dimensions         | 1520x3465x1700(mm) |
| ● Weight             | 1090(kg)           |



恒暉氣動工程有限公司

Ever Bright Printing Machine Fty Ltd  
 地址：香港葵涌圳邊街1號南華工業大廈18樓  
 18/F, South China Ind Bldg., No.1 Chun Pin St., Kwai Chung, Hong Kong.  
 Tel: (852)2421 8573(8 Lines) Fax: (852)2489 2512, 2423 1428  
 http://www.ever-bright.com e-mail: info@ever-bright.com